

## The Human Brain Atlas

Keith D. Sudheimer, Brian M. Winn, Garrett M. Kerndt, Jay M. Shoaps, Kristina K. Davis, Archibald J. Fobbs Jr., and John I. Johnson

Radiology Department, Communications Technology Laboratory, and College of Human Medicine, Michigan State University;  
National Museum of Health and Medicine, Armed Forces Institute of Pathology

### A note concerning stained sections:

In this atlas you can view MRI sections through a living human brain as well as corresponding sections stained for cell bodies or for nerve fibers. The stained sections are from a different brain than the one which was scanned for the MRI images. Furthermore, for the stained sections, the brain was removed from the skull, dehydrated, embedded in celloidin, cut with a sliding microtome, passed through several staining and differentiating solutions, and mounted on glass slides. Each step of these procedures changed the shape of the brain and of the sections. Therefore the stained sections will be quite a different size and shape than those of the MRI sections. Nevertheless, comparing MRI images with stained sections from approximately the same level can greatly increase understanding of the internal architecture of these brains.

<https://www.msu.edu/~brains/brains/human/index.html>

### Human Atlas Links

[Human Brain Home](#)

[Search Through the Sections](#)

[Introduction and Methods](#)

[Coronal Sections](#)

[Horizontal Sections](#)

[Sagittal Sections](#)

[Human Hypothalamus](#)

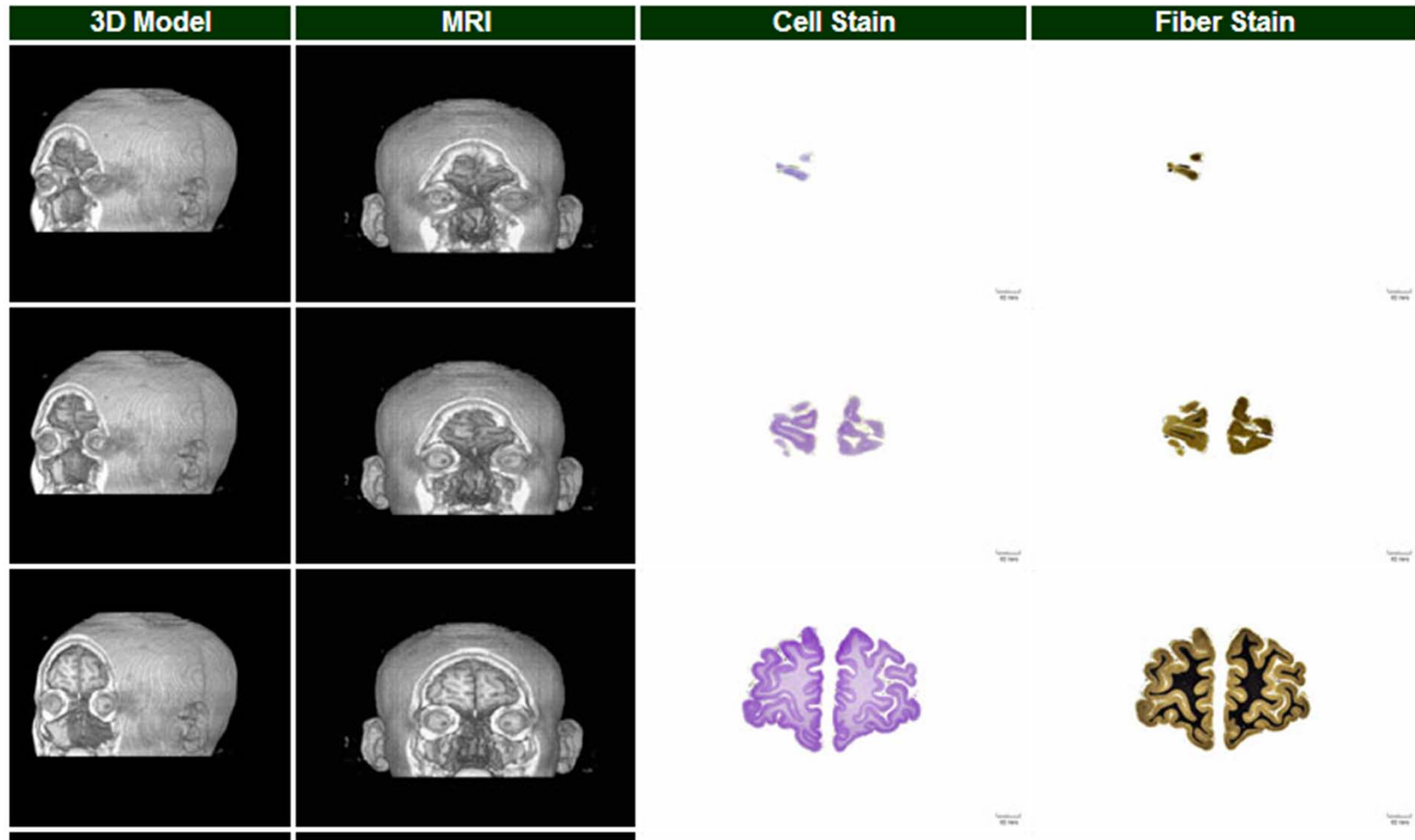
[Human Brainstem](#)

[Movies](#)

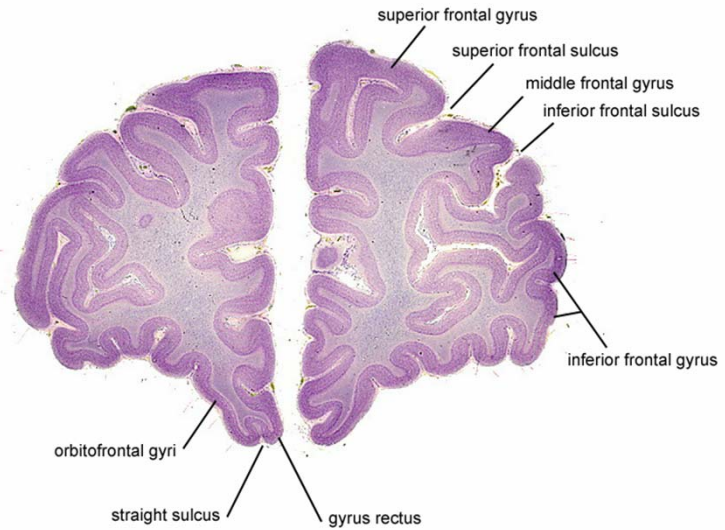
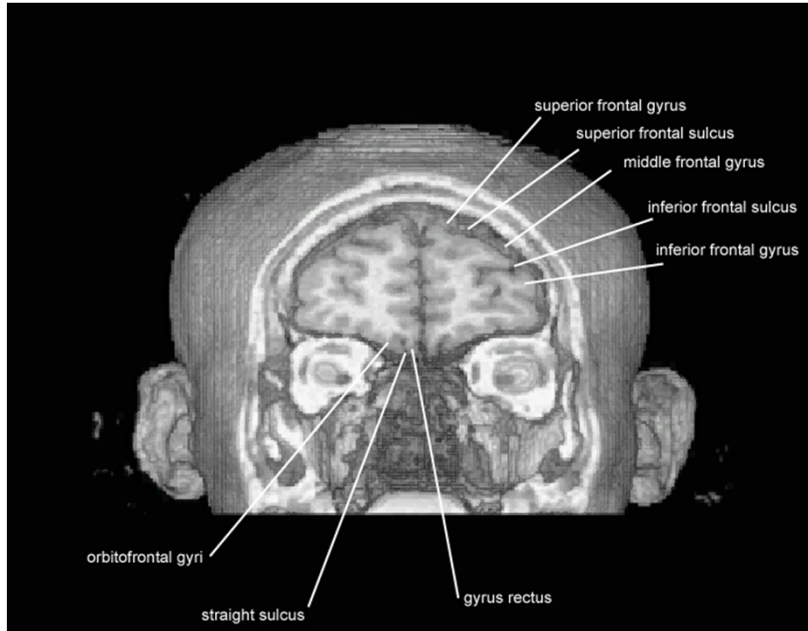
[Acknowledgments](#)

# Coronal Sections of the Human Brain

Click on the image you would like to see.



<https://www.msu.edu/~brains/brains/human/index.html>

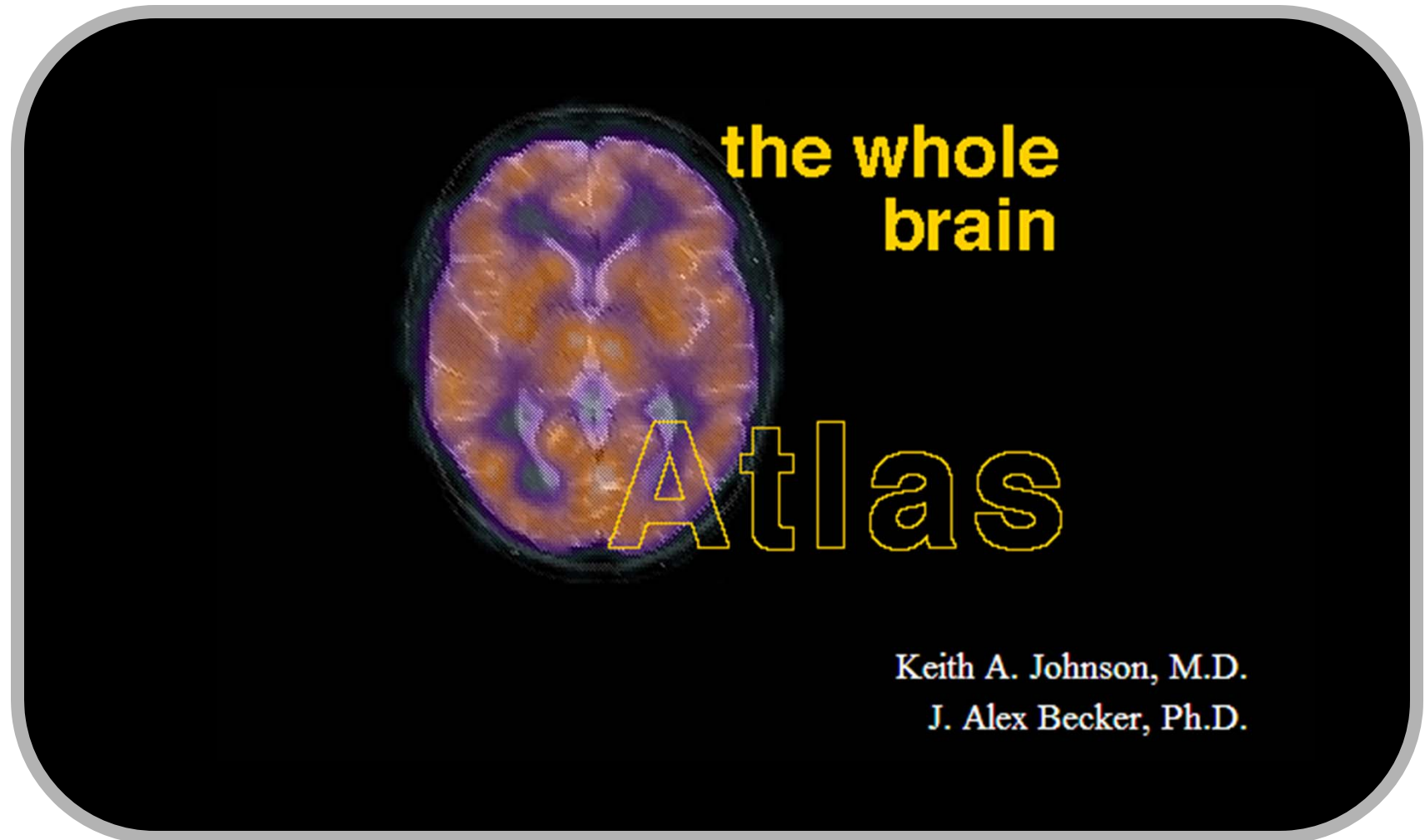


[Human Brain Menu](#) [Coronal Montage](#) [Search Atlas](#)

[Anterior](#)
Coronal
 [Posterior](#)  
 Level 0400

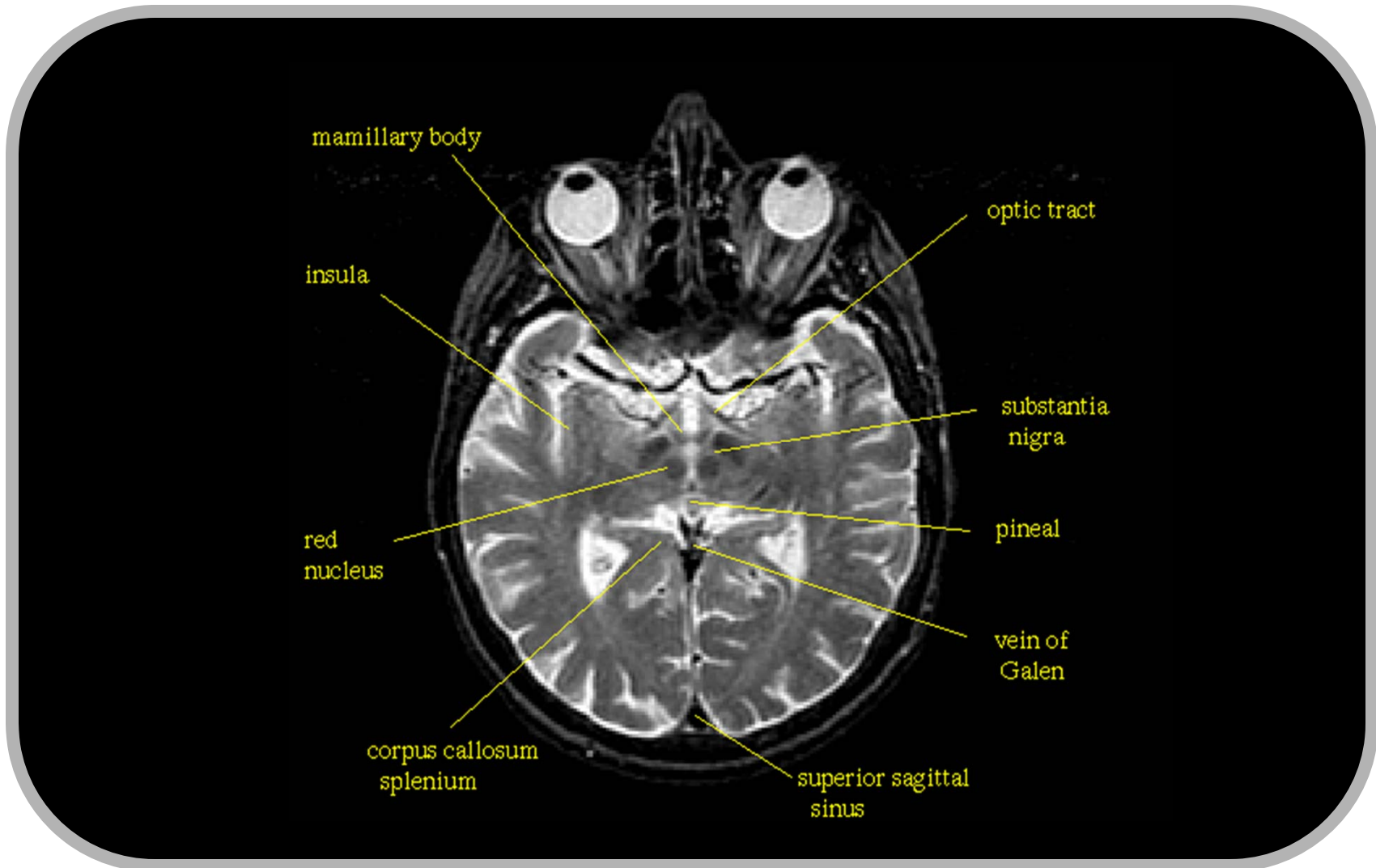
<a href="#">3D Model</a>	<a href="#">MRI</a>	<b>Cell Stain</b>	<a href="#">Fiber Stain</a>
		<a href="#">Unlabeled</a>	
		<b>labeled</b>	

<https://www.msu.edu/~brains/brains/human/index.html>



<http://www.med.harvard.edu/AANLIB/home.html>

Cogs 11  
Minds and Brains



<http://www.med.harvard.edu/AANLIB/home.html>

Cogs 11  
Minds and Brains